



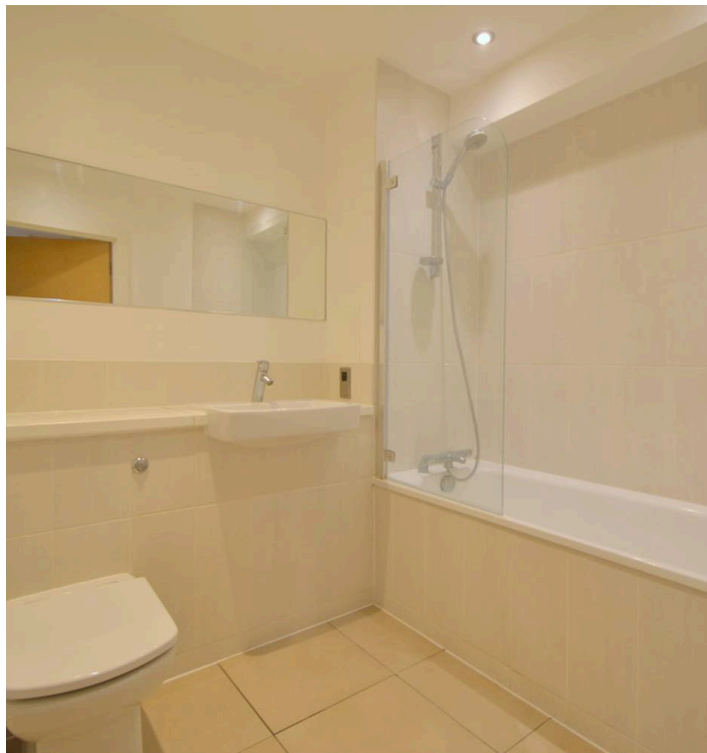
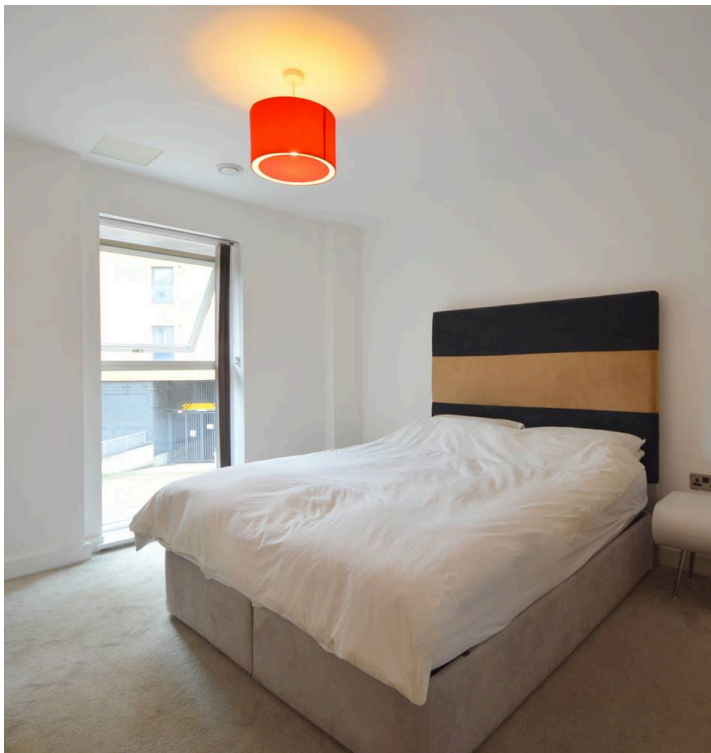


One Bedroom Apartment

- Babbage Point, 20 Norman Road, SE10

Set within a sought-after creekside development in the heart of Greenwich, this well-presented one-bedroom apartment offers bright, modern living with excellent access to local amenities and transport links.

The property features a spacious double bedroom with full-length fitted wardrobes, providing ample storage. The open-plan kitchen and reception area is well designed for both relaxing and dining, and comes fully equipped with integrated appliances including a fridge/freezer, dishwasher, electric oven and gas hob.



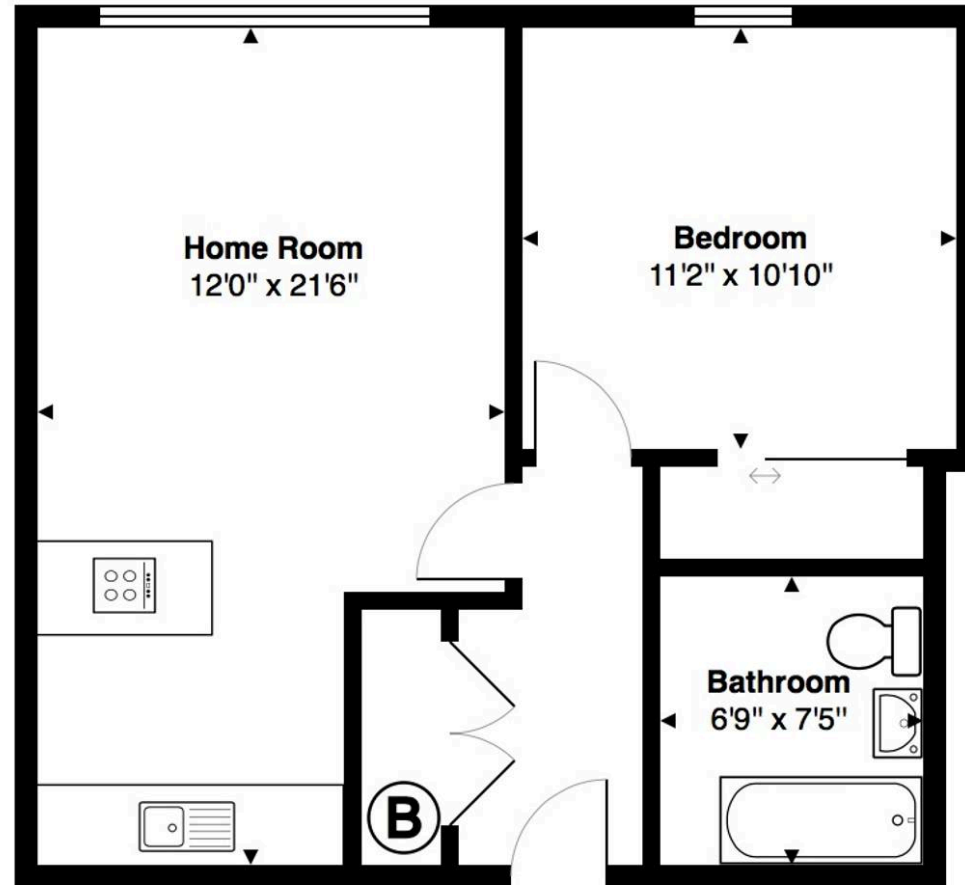
Large floor-to-ceiling windows in both the living area and bedroom allow for an abundance of natural light, creating a bright and airy atmosphere throughout.

Residents of Babbage Point benefit from access to a generous communal terrace with views across Greenwich, as well as a scenic footpath along the creek, offering a peaceful setting just moments from the vibrancy of central Greenwich.

Babbage Point, Greenwich

Total Area: 499 ft²

All measurements are approximate
and for display purposes only





Independent London Estate Agents

Independent London Estate Agents, Studio 3, 6 - 8 Cole Street - SE1 4YH

02070996373 • info@independentlondon.net • www.independentlondon.co.uk/